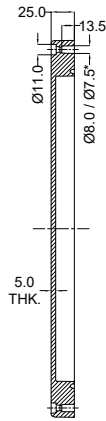
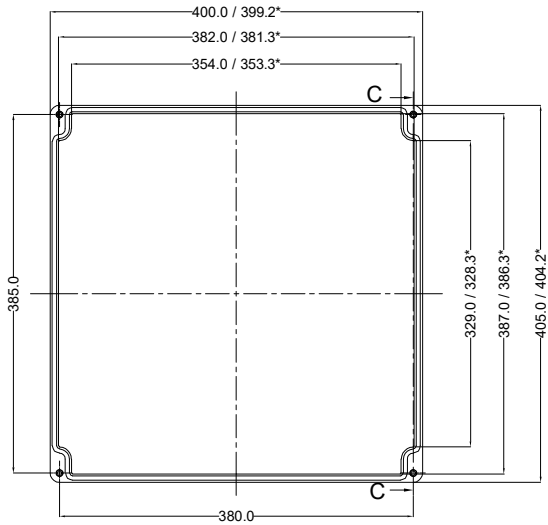
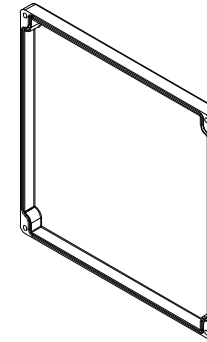


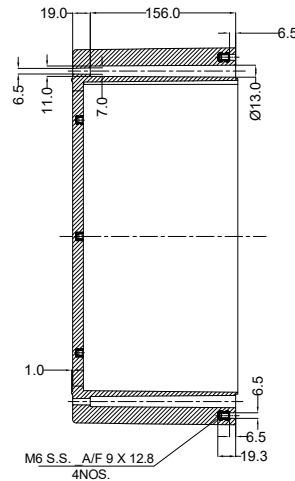
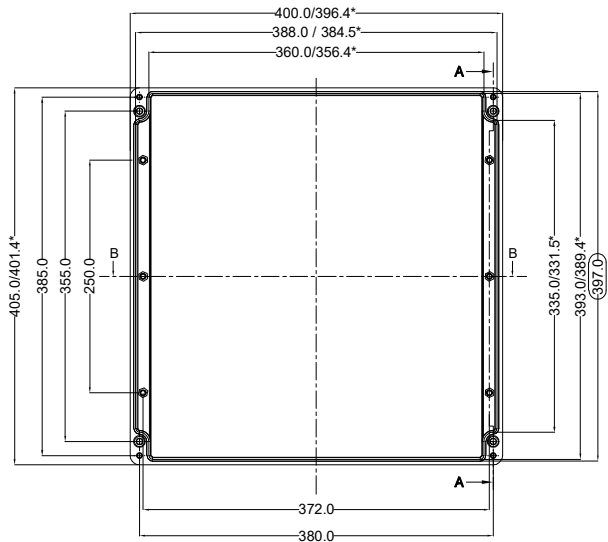
LID



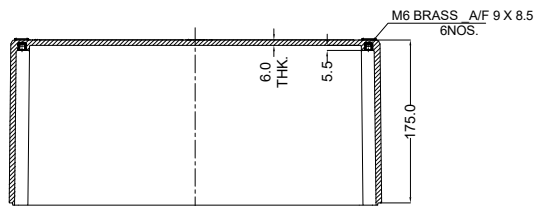
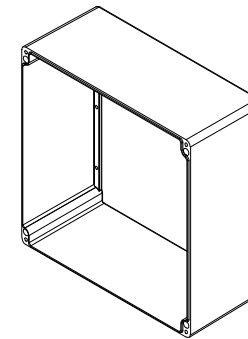
SECTION C-C



BASE



SECTION A-A



SECTION B-B

*=Conical form tapering downwards
Free dimensions-tolerance to DIN 16901-140

Material:- Glass fiber Reinforced Polyester (GRP) Finish:- RAL7000 (grey) or RAL9011 (black) General Tolerances DIN ISO - Linear Tol.: , Angular Tol.: Surface Finish: All Dimensions: mm	TITLE :- GRP JUNCTION BOX 400 x 405 x 201	This drawing and any information or descriptive material set out on it are the confidential property of Company Name and MUST NOT BE DISCLOSED, COPIED in whole or part or used for any purpose without the written permission of Company Name.
	CODE: OGGJB19 DRG. NO. OG-GJB-400405201	DATE 22/4/22 CHECKED BY: GA 22/4/22
FIRST ANGLE PROJECTION DO NOT SCALE	OERIGO OERIGO GLOBAL PRIVATE LTD	REV 00

Description	Rev.	Date