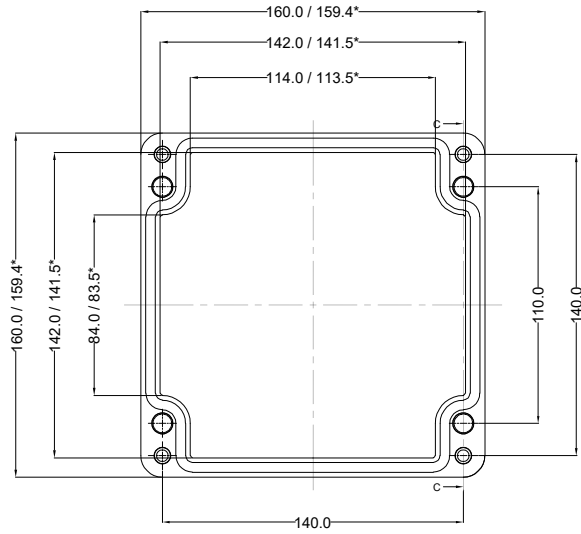
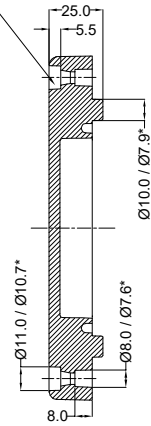


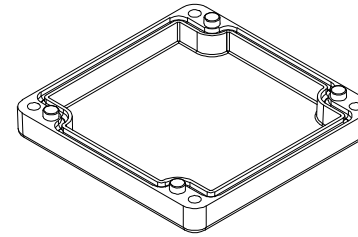
LID



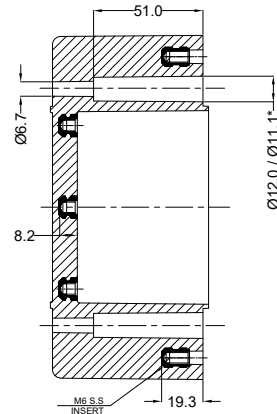
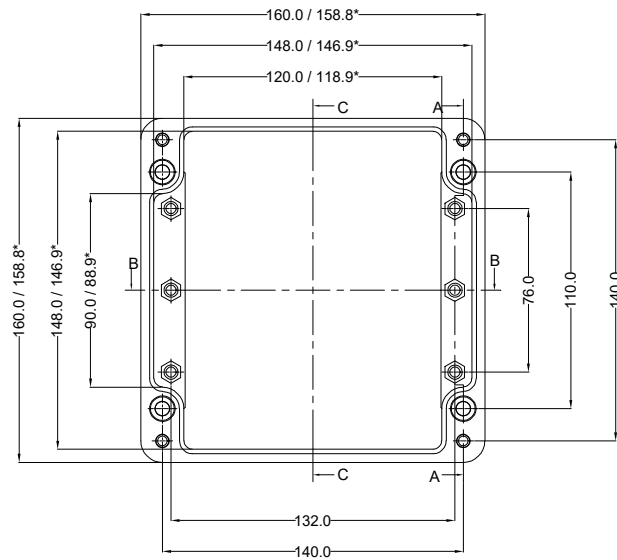
Cylinder Screw
M6 x 30/10 similar to DIN 84



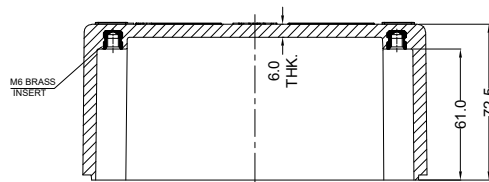
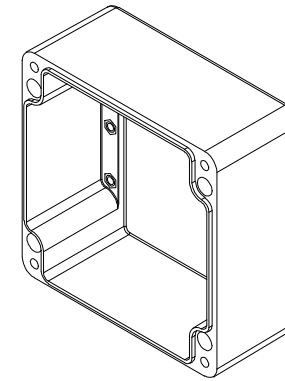
SECTION A-A



BASE



SECTION A-A



SECTION B-B

*=Conical form tapering downwards
Free dimensions-tolerance to DIN 16901-140

Material:- Glass fiber Reinforced Polyester (GRP)

Finish:- RAL7000 (gray) or RAL9011 (black)

General Tolerances
DIN ISO -
Linear Tol.: , Angular Tol.:
Surface Finish:

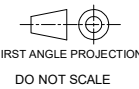
All Dimensions: mm

TITLE :-

GRP JUNCTION BOX
160 x 160 x 90

This drawing and any information or descriptive material set out on it are the confidential property of Company Name and MUST NOT BE DISCLOSED, COPIED in whole or part or used for any purpose without the written permission of Company Name.

DRAWN BY:	DATE
PK	22/4/22
CHECKED BY:	DATE
GA	22/4/22



OERIGO
OERIGO GLOBAL PRIVATE LTD

CODE: OGGJB07

DRG. NO. **OG-GJB-16016090**

REV
00

SHEET 1 OF 1

Description	Rev.	Date